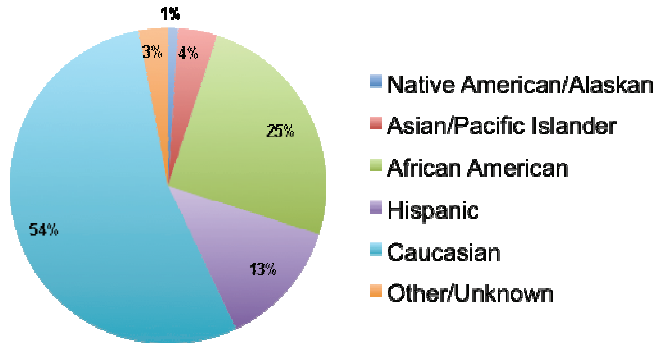


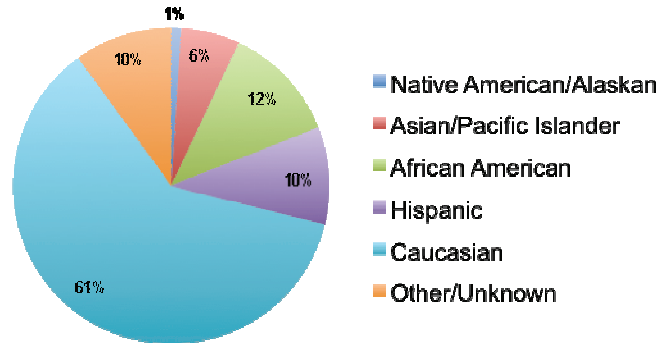
# Student Demographics

*University of Phoenix Enrollment*

## UOPX Student Enrollment



## National Student Enrollment



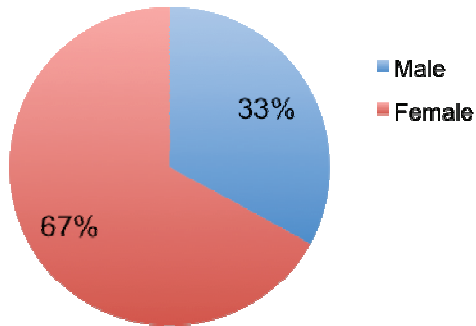
# Student Gender

*University of Phoenix Enrollment*

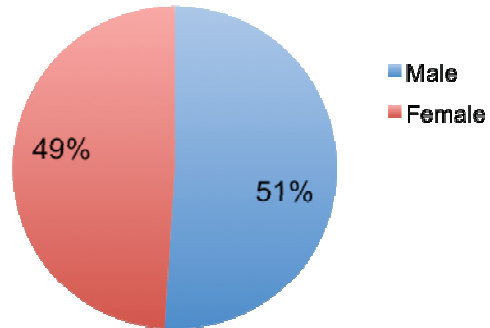


MILKEN INSTITUTE

## UOPX Enrollment By Gender

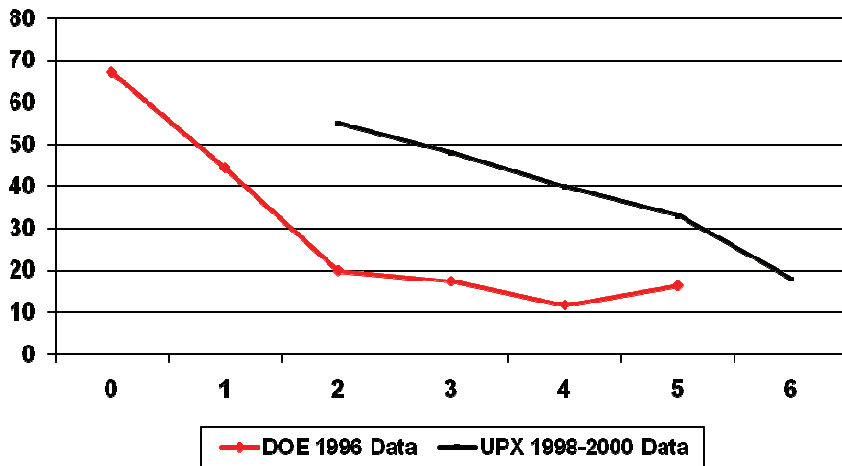


## National Enrollment By Gender



# Risk Factors vs. Bachelor Completion Rates

*University of Phoenix*



- 1 Enrolling part-time
- 2 Delaying entry to postsecondary education after high school
- 3 Not having a regular high school diploma
- 4 Having children
- 5 Being a single parent
- 6 Being financially independent of parents
- 7 Working full time while enrolled

Note: Almost all UOPX students in the 1998–2000 cohort studied had R6 and R7 risk factors; at that time, UOPX required students to be working and 23 years old.

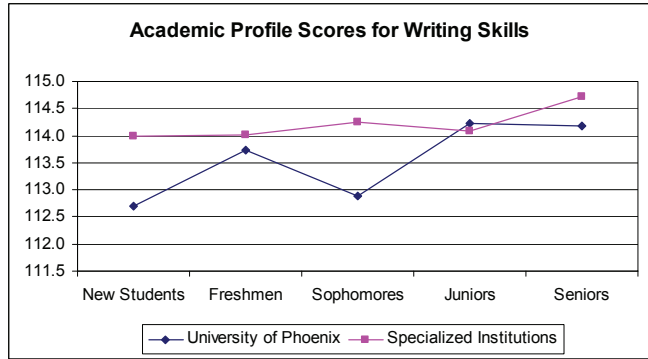
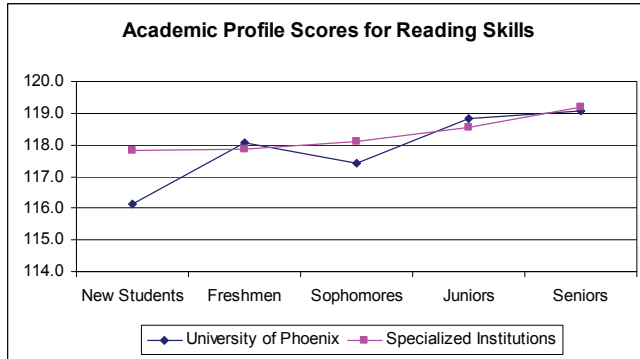
# Comparable Learning Outcomes

*University of Phoenix*



MILKEN INSTITUTE

Despite higher risk factors, our students make gains in learning outcomes comparable to conventional 4 year schools

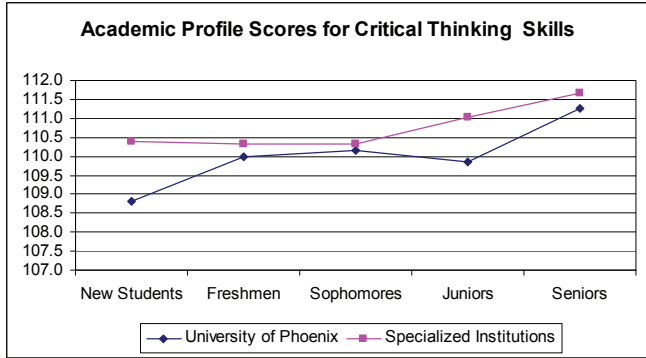
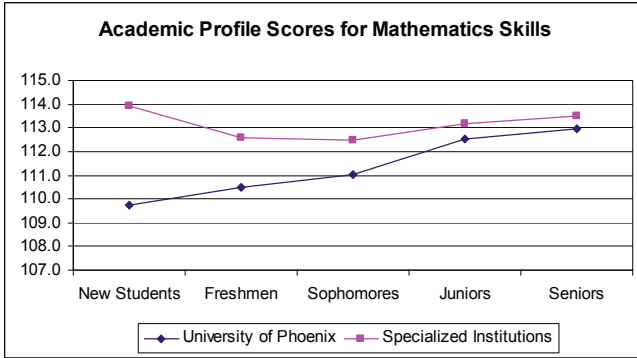


Source: ETS 2007 Measure of Academic Proficiency and Progress (MAPP)

# Comparable Learning Outcomes

*University of Phoenix*

Despite higher risk factors, our students make gains in learning outcomes comparable to conventional 4 year schools



Source: ETS 2007 Measure of Academic Proficiency and Progress (MAPP)

# Completion Rates

## *University of Phoenix*



Despite more risk factors, our students retain and complete their programs at percentages comparable to the rates of graduation at public colleges

| <b>Program Level</b> | <b>University of Phoenix</b> | <b>National Rate</b> |
|----------------------|------------------------------|----------------------|
| Associate            | 27% <sup>1</sup>             | 27%*                 |
| Bachelor             | 38% <sup>2</sup>             | 43%*                 |
| Graduate             | 60% <sup>3</sup>             | 61%**                |

UOPX Completion Rate shown higher here than on IPEDS. IPEDS reports first -time students only. Majority of students in these cohorts had transfer credits and do not fall into IPEDS categorization.

<sup>1</sup> Associate 2003 cohort – Closest available UPX data to IPEDS comparison data for Academic Year 2005

<sup>2</sup> Bachelor 2000 cohort - Closest available UPX data to IPEDS comparison data for Academic Year 2005

<sup>3</sup> Graduate 2003 cohorts- Closest available UPX data to IPEDS comparison data for Academic Year 2005

\*\*College Graduation Rates 1947-2006”, Postsecondary Education Opportunity, Number 173, November 2006, [www.postsecondary.org](http://www.postsecondary.org) Rates shown: 2005

\*\*Data Sources: Master’s Degree Persistence and Attainment 1993-2003, Council of Graduate Schools, [www.csgnet.org](http://www.csgnet.org) Rates shown: 2003